



LACKEBY

Lackeby Roto-Sieve® septic unit

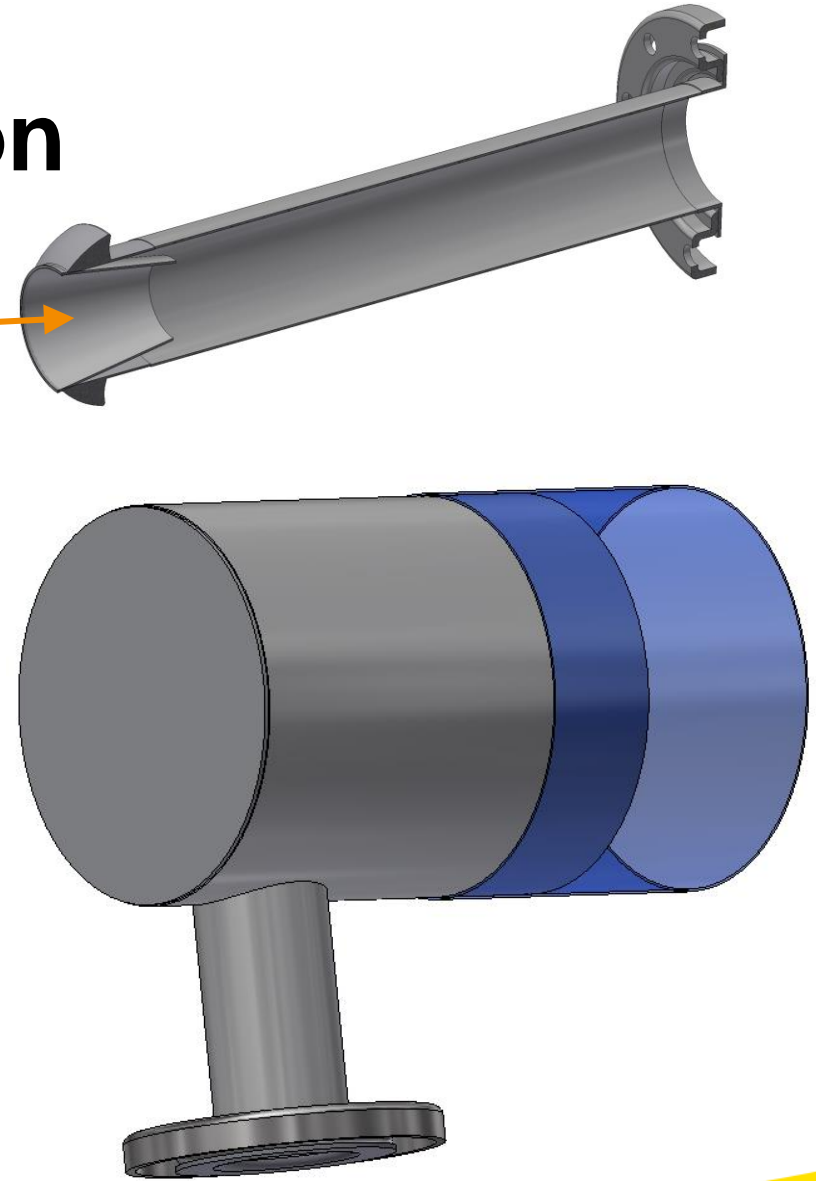
General

- RSS-24 flow range is 70-100m³/h
- RSS-36 flow range is 100-130m³/h



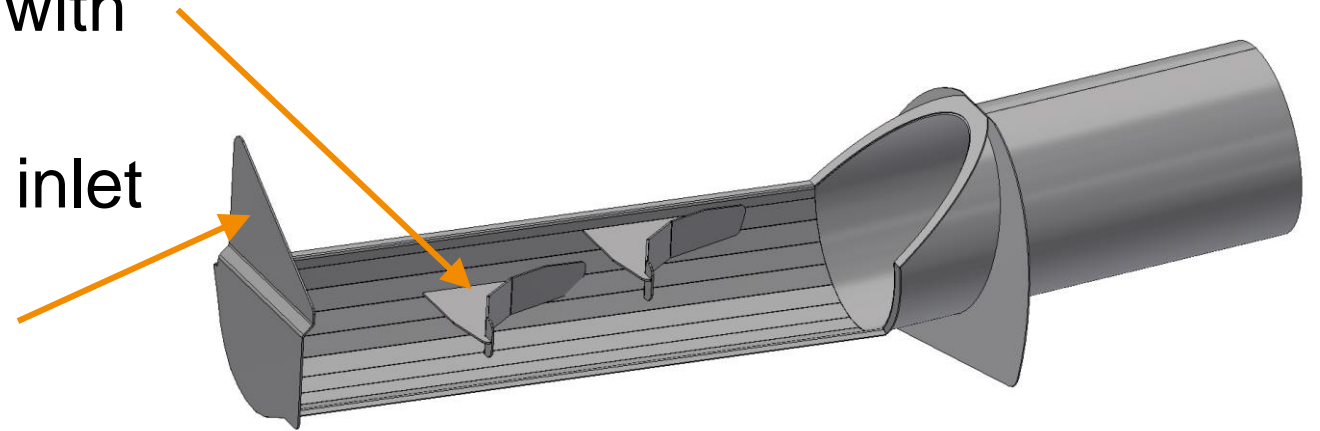
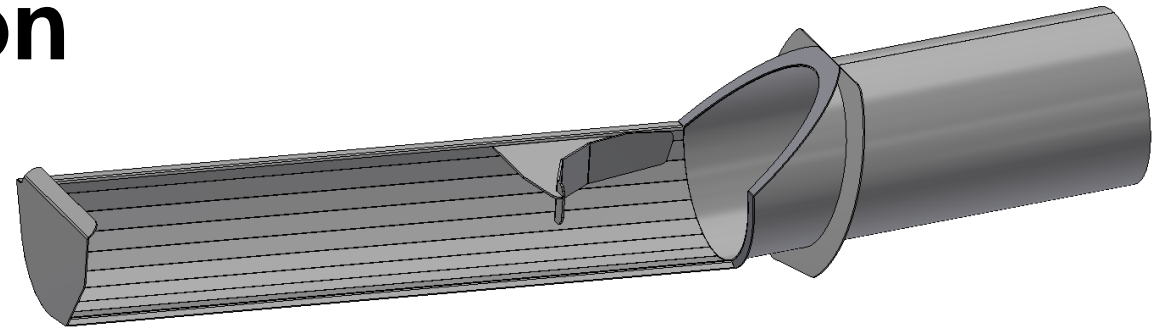
Special designed inlet section

- Special designed cone on inlet pipe for maximum flow adjustment
- Length of the piping set to ensure proper function if adding a flow meter
- Flow damper for lowering the inlet velocity



Improved flow distribution

- RS std inlet pipe →
- On the model RSS 36 a standard design pipe will be used but with one additional baffles plate
- The end wall on the RSS 36 inlet pipe will be higher to avoid flooding over the end wall



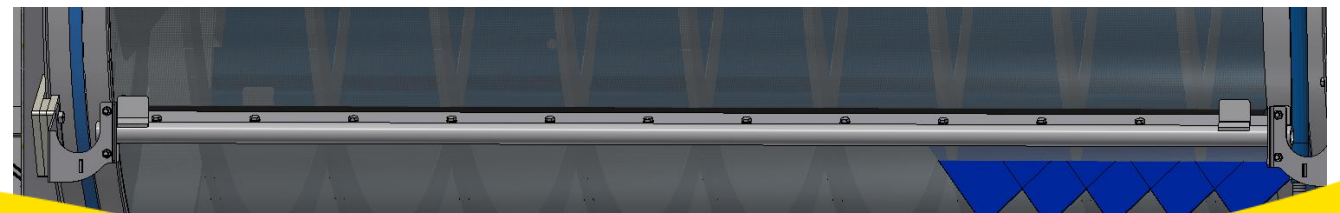
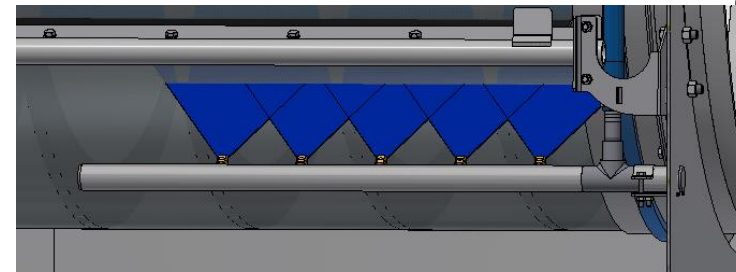
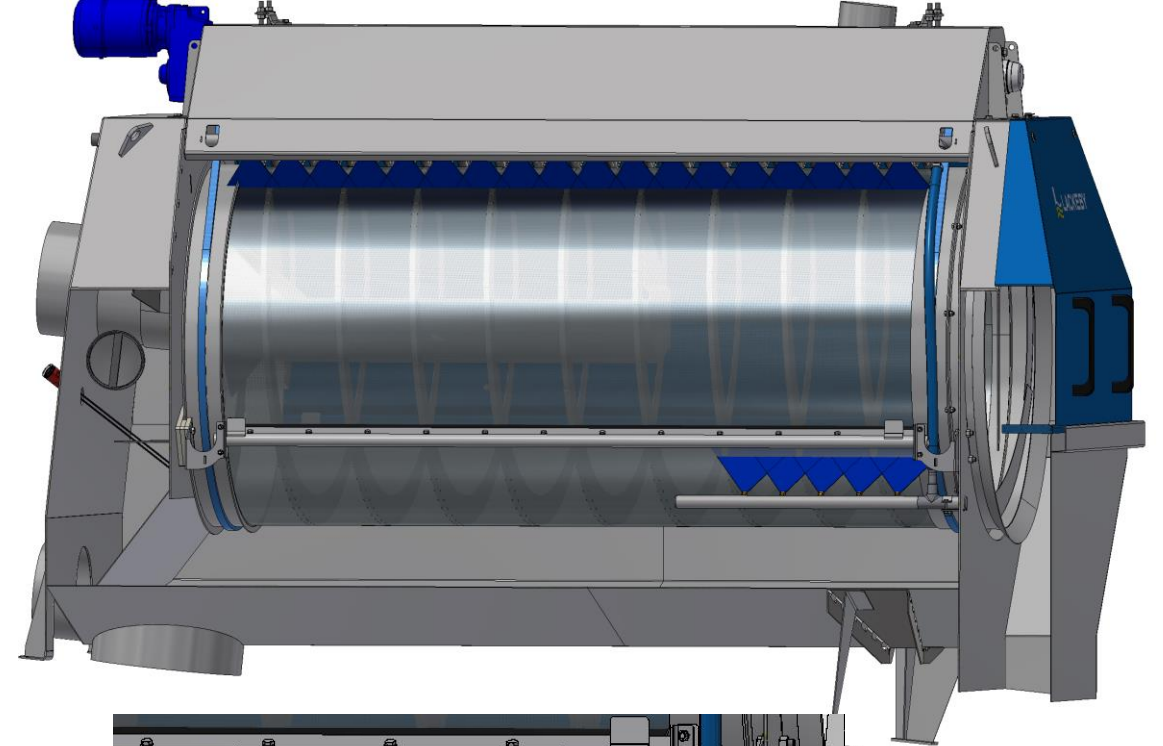
Drum

- Standard drum comes with:
 - Ø 6 mm perforation
 - 1,5mm thickness
 - 100 mm high internal screw
 - driving belt pins to manage high amount of material in drum



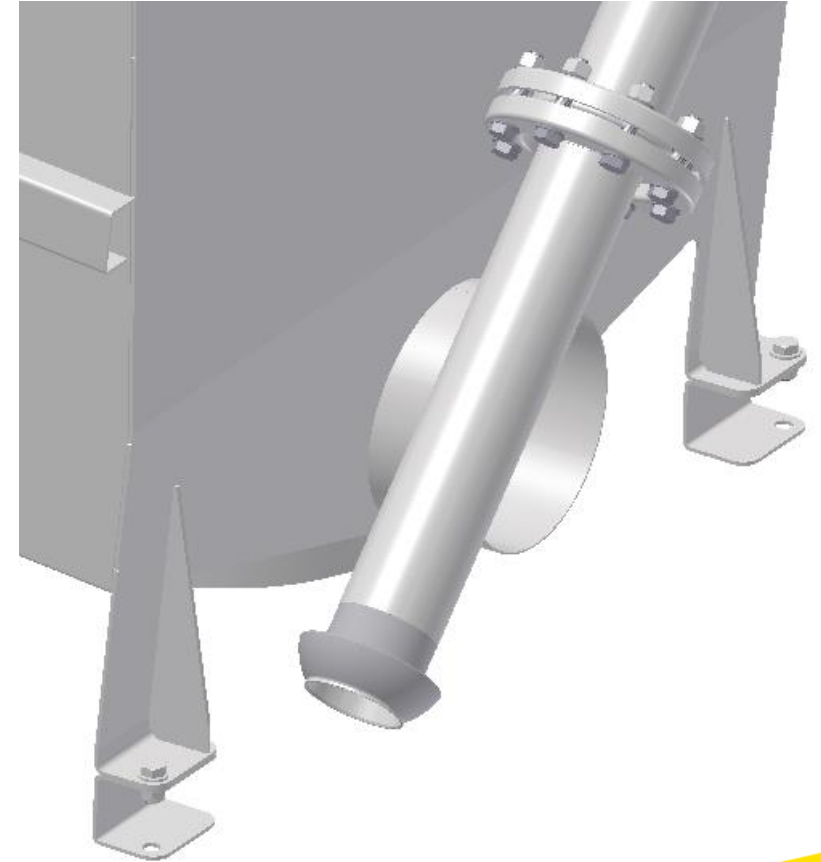
Improved drum cleaning

- Flushing system
 - Added a lower flush pipe
 - At least 5 bar pressure to be used
 - Consumption during operation is 72 l/min at 5 bar
 - Flushing time is during septic unloading cycle + at least 2 min
- Rubber scraper



Improved overflow performance

- Overflow performance improved to avoid frequent overflows due to high amount of septic sludge
- Changed installation angle to 4° by using additional legs mounted on existing legs on the inlet side



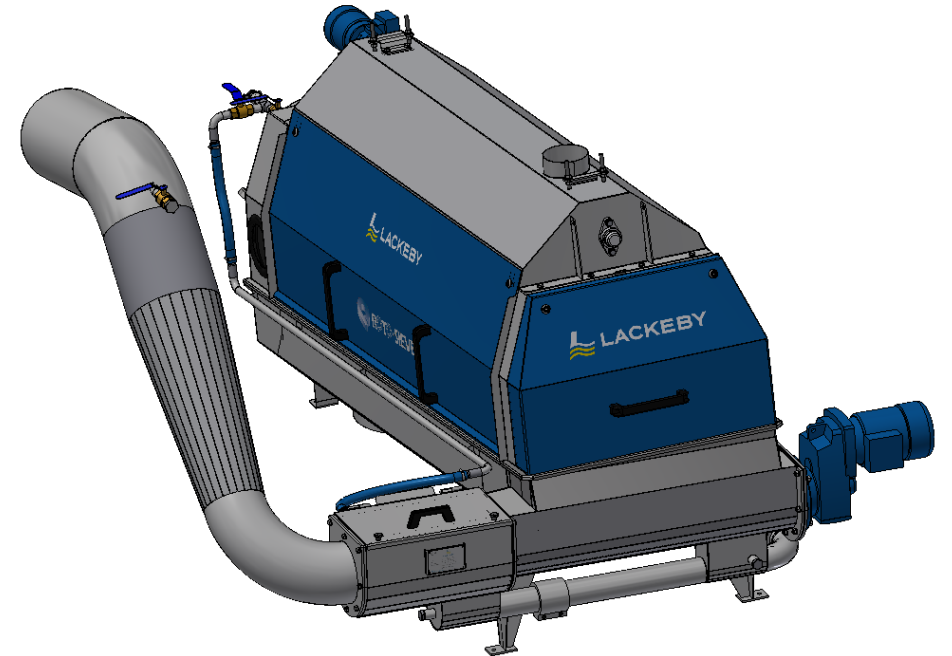
Control equipment

- Control cabinet with PLC
- User friendly (Start, stop, automatic flushing)
- Overflow alarm
- Flow meter showing actual and total
- Emergency stop



RSS with integrated Screw conveyor press

- RSS 24 will come as an option with integrated press
- Can be equipped with screenings washing
- Reject pipe from the press can be integrated into the Roto-Sieve tray





www.lackeby.com

info@lackeby.se